

Concrete Screedless Floors

Flood Screedless Floors are designed and manufactured as finished precast units that do not require a structural topping or finishing screed on site. The soffit can be painted directly and the top surface is ready to receive a tile, carpet or laminate wood floor finish.



Benefits

- Screedless Concrete Floors are used in hotel, student accommodation or custodial developments and are used in conjunction with precast or in-situ concrete cross walls.
- Speed of construction and reduction of site times play an increasing role in modern construction methods.
- The precast unit can be manufactured to include all associated services, conduits and connection boxes.
- Structural ties are achieved by casting in projecting loops which connect with the vertical concrete elements on site.
- Units are manufactured to suite room size up to a maximum of 3.8m wide.
- The screedless floor provides a jointless ceiling that can be painted directly.
- Elimination of wet trades on site.
- Dramatic reduction in programme time.
- Excellent sound characteristics.
- Provides significant thermal mass for natural ventilation.
- Fire and thermal resistant.

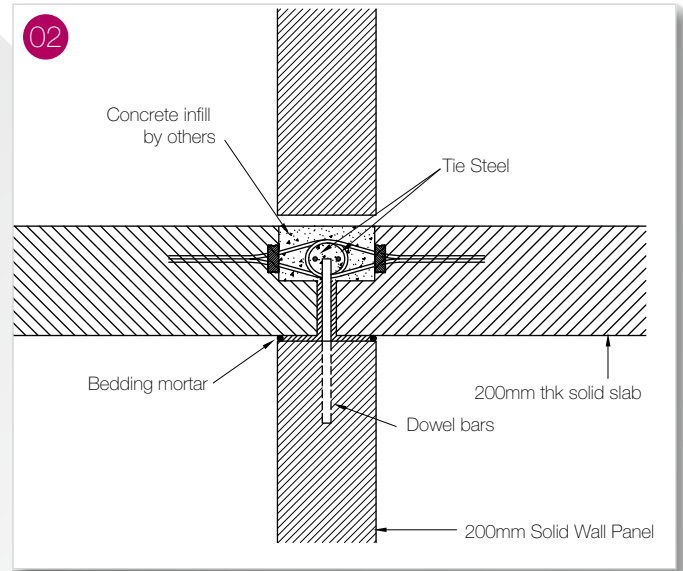
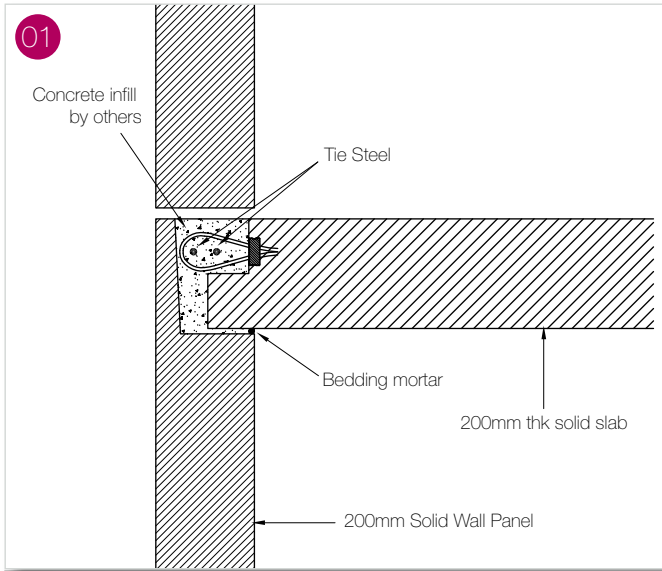


floodprecast.ie

Hilltown, Oldcastle, Co. Meath, Republic of Ireland.
T: +353 (0)49 8541477 F: +353 (0)49 8541311
W: www.floodprecast.ie E: info@floodprecast.ie

floodprecast.co.uk

43 Temple Row, Birmingham B2 5LS, United Kingdom.
T: +44 (0)845 6801417 F: +44 (0)845 6801419
W: www.floodprecast.co.uk E: info@floodprecast.co.uk



Concrete Screedless Floors

01. Typical end bearing detail.

02. Typical end bearing detail. 200mm internal solid wall panel.

